

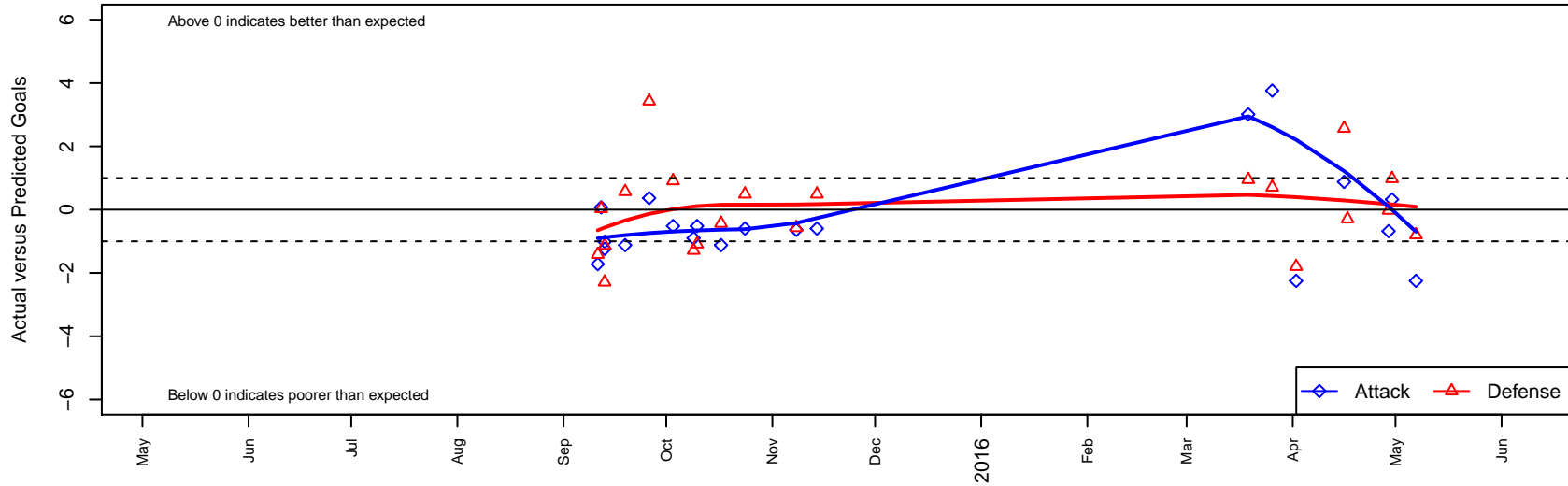
FC Spokane Grey B01

FC Spokane
 Spokane, WA
 B01 total strength=814
 attack=1.75 defense=0.63
 fall league = PSPL–Inland Div 1 U14
 spr league = Spr PSPL–Inland Div 2 U14
 notes= Retan 2013; Lopez 2014–5

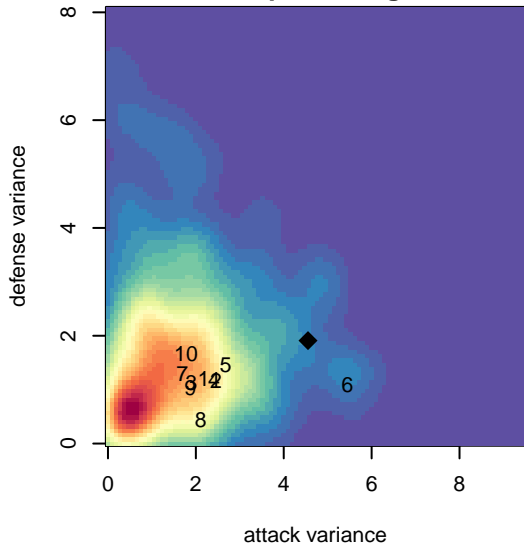
alt names used:
 FC SPOKANE B01 GREY LOPEZ
 FC Spokane B01 Grey–Lopez
 FC Spokane B01 Grey–Lopez

Venues played:
 2015 Pend Orielle Cup U14/15 Silver
 2015 PSPL–Inland Div 1 U14
 2015 Spr PSPL–Inland Div 2 U14

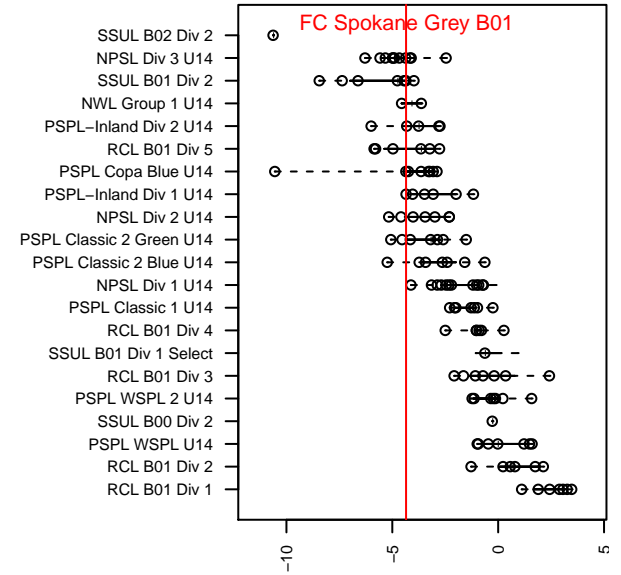
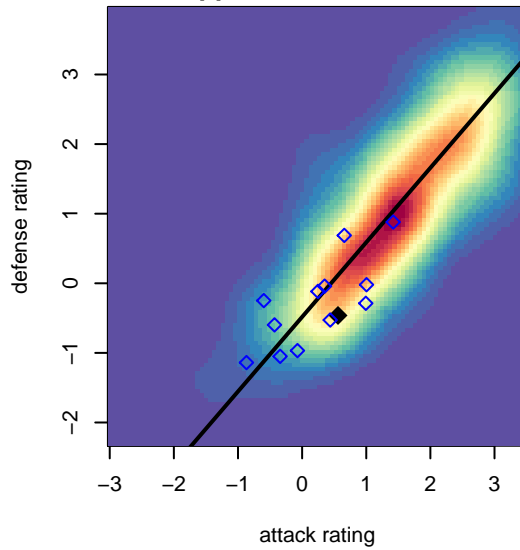
FC Spokane Grey B01
 Dots are actual minus expected GF (blue circles) and GA (red triangles).
 Blue line is smoothed change in attack strength. Red is smoothed change in defense strength.



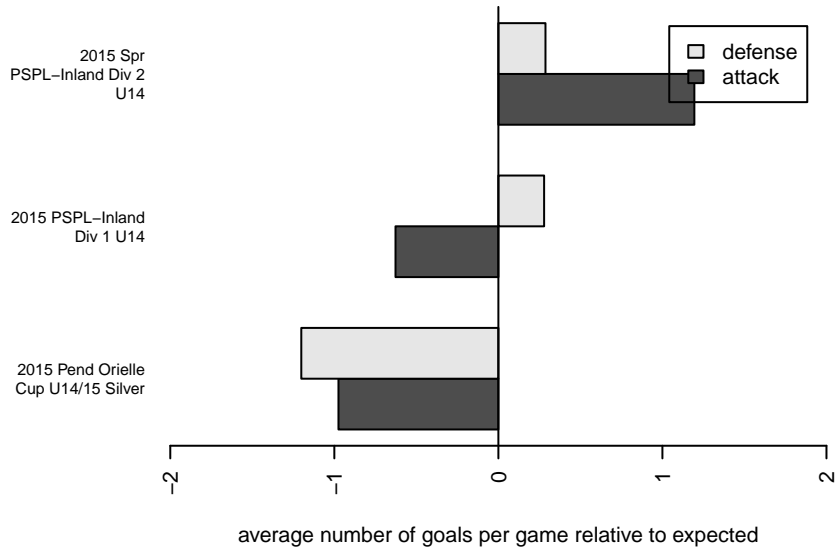
**attack and defense variance (black dot)
relative to other teams
and top 10 in region**



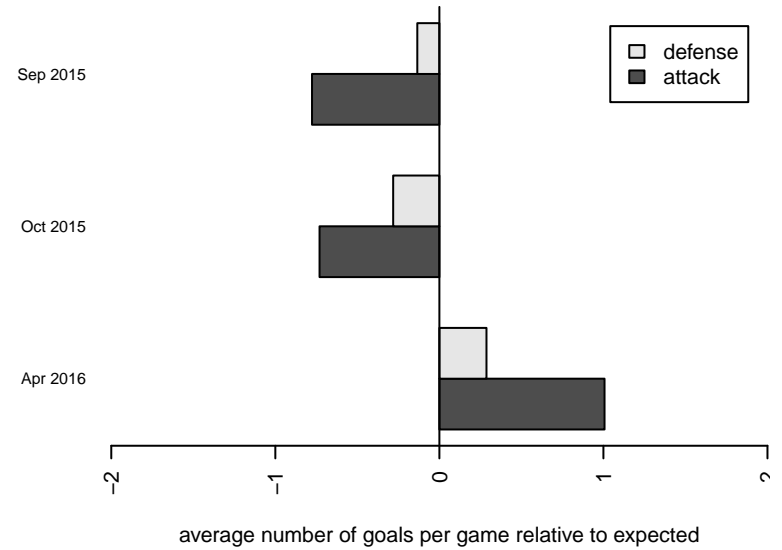
**attack and defense rating
relative to others at age
and all opponents in last 13 months**



Performance relative to 13 month average



Performance relative to 13 month average



date	home		away		venue	pred.home	pred.away
2016-05-07	FC Spokane Grey B01	0	IEYSA Valor Black B01	3	2015 Spr PSPL-Inland Div 2 U14	2.25	2.20
2016-04-30	Breakers Red B01	1	FC Spokane Grey B01	4	2015 Spr PSPL-Inland Div 2 U14	1.98	3.68
2016-04-29	FC Spokane Grey B01	3	Breakers Red B01	2	2015 Spr PSPL-Inland Div 2 U14	3.68	1.98
2016-04-17	FC Spokane Grey B01	11	Idaho Thunder B01	1	2015 Spr PSPL-Inland Div 2 U14	4.24	0.71
2016-04-16	Spokane Scotties Pratt B01	2	FC Spokane Grey B01	3	2015 Spr PSPL-Inland Div 2 U14	4.57	2.12
2016-04-02	IEYSA Valor Black B01	4	FC Spokane Grey B01	0	2015 Spr PSPL-Inland Div 2 U14	2.20	2.25
2016-03-26	Idaho Thunder B01	0	FC Spokane Grey B01	8	2015 Spr PSPL-Inland Div 2 U14	0.71	4.24
2016-03-19	FC Spokane Grey B01	7	FC Spokane Grey 2002B	0	2015 Spr PSPL-Inland Div 2 U14	3.99	0.95
2015-11-14	FC Spokane Grey Triplett B01	4	FC Spokane Grey B01	1	2015 PSPL-Inland Div 1 U14	4.49	1.60
2015-11-08	Cobra Morritos B01	7	FC Spokane Grey B01	0	2015 PSPL-Inland Div 1 U14	6.43	0.64
2015-10-24	FC Spokane Grey B01	1	FC Spokane Grey Triplett B01	4	2015 PSPL-Inland Div 1 U14	1.60	4.49
2015-10-17	FC Spokane Grey B01	1	Spokane Scotties Pratt B01	5	2015 PSPL-Inland Div 1 U14	2.12	4.57
2015-10-10	FC Spokane Grey B01	1	Breakers Black Andersson 2001B	3	2015 PSPL-Inland Div 1 U14	1.52	1.91
2015-10-09	FC Spokane Black 2002B	4	FC Spokane Grey B01	0	2015 PSPL-Inland Div 1 U14	2.71	0.90
2015-10-03	Breakers Black Andersson 2001B	1	FC Spokane Grey B01	1	2015 PSPL-Inland Div 1 U14	1.91	1.52
2015-09-26	FC Spokane Grey B01	1	Cobra Morritos B01	3	2015 PSPL-Inland Div 1 U14	0.64	6.43
2015-09-19	Spokane Scotties Pratt B01	4	FC Spokane Grey B01	1	2015 PSPL-Inland Div 1 U14	4.57	2.12
2015-09-13	FC Spokane Grey B01	1	Flathead Rapids Black B01	2	2015 Pend Orielle Cup U14/15 Silver	2.01	0.87
2015-09-13	Idaho Thunder B01	3	FC Spokane Grey B01	3	2015 Pend Orielle Cup U14/15 Silver	0.71	4.24
2015-09-12	Flathead Force White B01	1	FC Spokane Grey B01	3	2015 Pend Orielle Cup U14/15 Silver	1.03	2.93
2015-09-11	Sting SC Liverpool B01	4	FC Spokane Grey B01	1	2015 Pend Orielle Cup U14/15 Silver	2.58	2.72